



Available work Dec. '22 - Jan. '23

Look on the website for larger pictures of these paintings.
Call, text or email me if you have made a selection or
have a question: 505-710-0257
BethLarsenart@gmail.com

These three are available through Jan. 5 at the
New Mexico Art League Small Works Show & Sale
The Art League is **closed** for the holidays Dec. 24 through Jan. 2.
Shop these works from Tues., Jan. 3 - Sat., Jan. 7 10 am - 4 pm
3409 Juan Tabo Blvd. NE, Albuquerque



Spring Flows Poetic II

Each are 12" sq. mixed media, acrylic on watercolor paper mounted on birch panel; custom wood frame. \$250 each.



Spring Flows Poetic I



Non essential #6

6x6" acrylic,
mixed media on
watercolor paper,
mounted on birch panel,
wood frame. \$160

These 5 pieces are available at the Sacred Arts Gallery in Parish Hall at St. Mark's Episcopal Church. Open M- Th 9 am - 2 pm Sun. 9 am - 2 pm through March 3.



Vistas 1



Vistas 2



Vistas 3

4" x 4" acrylic and fiber on birch panel. \$30 each



Apple leaves, morning dew

6"x6" cyanotype and acrylic
on yupo, mounted on birch
panel. \$40



Heading Home

10"x10" acrylic on watercolor paper,
mounted on birch panel, black wooden frame
\$150

AVAILABLE FROM MY STUDIO:



Calm

Gaze upon the mountains
and calm your soul.

16x20" acrylic, fine hardwood floater frame.

\$425



Touchstones

A black flint stone with silica can be used to test the purity of gold. Could the landscape view be our touchstone for a genuine and fabulous environment? Perhaps so.

16x20" acrylic; fine hardwood floater frame.

\$425

Sunset Howl

An ode to the coyotes who frequent our yard.
11x14" acrylic on watercolor, mounted on wood panel in wood frame
\$275





The Perfect Equation

Is there one? Since I'm not a scientist, it's a total mystery to me. I recently read that Euler's Identity is an equation that comprises the five most important mathematical constants. Apparently, it's been compared to a Shakespearean sonnet and physicist Richard Feynman called it "the most remarkable formula in mathematics." That's very appealing, don't you think?

18X18" acrylic, mixed media \$375



Found on the island

Clear azure blue sky, sparkling ocean, vibrant greens, patterns of land and the warmth of the sun.

18X18" acrylic, mixed media in custom wood frame \$475



Finding his way through the universe

This was created with the new generation of space explorers in mind. I see it as an abstracted space ship, but you may see a sailboat. It's your choice. Mariner explorers hundreds of years ago were just as brave as today's off planet adventurers. I'm in awe of them all.

18X18" acrylic, mixed media in custom wood frame

\$475



Memories of that summer

Bits and pieces, fragments of memory, snippets of color, flashes of light and pattern. This is how memory seems to work for me.

18X18" acrylic, mixed media in custom wood frame

\$475



Apple leaves, rainy day

11x14" cyanotype on yupo,
acrylic

\$175



Pear tree, fall

11x14" cyanotype on yupo,
acrylic

\$175



Ginkgo

11x14" cyanotype on
yupo, acrylic

\$175



Schefflera

14x18" cyanotype
on yupo
paper, acrylic,
white frame
with glass

\$150



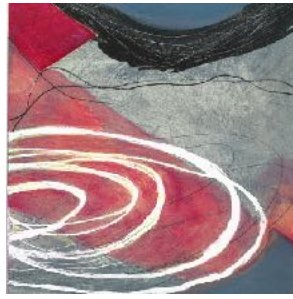
Black walnut, blue

10x10" cyanotype on
watercolor paper,
mounted
on wood panel.

\$50



#1



#2



#3



#4

Reaching Conclusions Series

As we mull over things in our mind, how do we ultimately reach the conclusions we do? This is my visual representation of that mysterious abstract mental process.

8x8" acrylic on watercolor paper, mounted on birch panels.

Group of four: \$425 Purchased individually: \$125 each.

Reaching Conclusions Series mini's

4x4" mini's These would look great hung together - vertically, horizontally or in a square.

Buy all four for \$100, or purchase individually for \$30.



Inscribed

Mysterious black monoliths inscribed for your interpretation. (Cue *Thus Spake Zarathustra*.) Aliens did not paint this one. When I painted this, I was thinking about interpretation of unclear messages.

18x24" acrylic on wooden panel, unframed - sides painted grey.

\$425



The Guardians

This small flock is keeping an impossibly large, magical egg safe. What could it be?

20 x 24" acrylic on canvas, custom wood frame.

\$400



Searching

As I painted *Searching in 2020*, I was feeling great appreciation for all the health care professionals and researchers who were dealing with the pandemic and looking for the solution.

24 x 20" acrylic on canvas

\$250



Swimmingly

When things glide along smoothly - ahhh. Don't you just love days like that? Look for the glimmer in this piece.

20 x 24" acrylic on canvas

\$300